

# Come with Me

*Andante* ♩ = 84

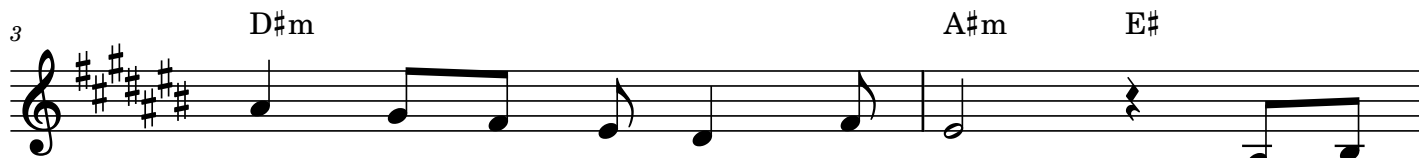
A#m

E#

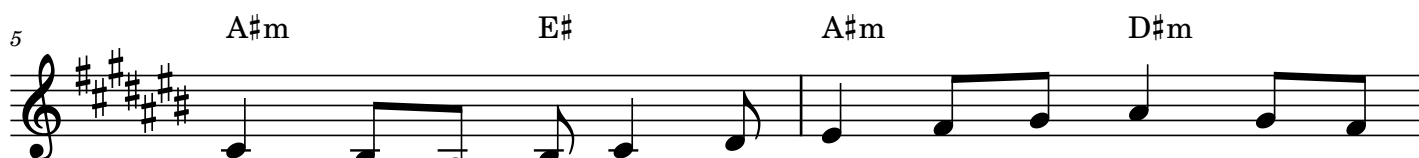
A#m



When it's dark, light a can - dle for kind - ness; when it's  
(We have) spent ma - ny days, ma - ny hours, fear - ing



dark, light a can - dle with love. when it's  
those that would tear us a - part. Light a



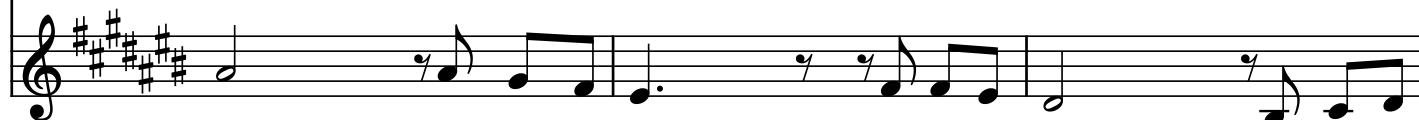
dark, light a can - dle for me and for you. Light a  
can - dle and count - er the hate and the fear, and with



can - dle; its light will see us through. Come with  
cour - age we'll face the day a - new.






Come with me, let's shine the light, for in our hands



me, let's shine the light, for in our hands lies hope to-

## Arrangement Permissions

-  One-time Adaptation
  -  New Arrangement OK
  -  Seek permission to arrange
- Look at the *Sing Out Love* "Permissions" section for further explanation

*Come With Me - 2*

12 C# D#m7 F# G#7 A#m7 To Coda

lies hope to-night. Come with me, the path is clear: A land of

-night. Come with me, the path is clear: A land of

15 E# A#m

hope is ve - ry near. We have

17 E# A#m B#dim A#m D#m D.S. al Coda

peace is ve-ry near. Come with

E# A#m

love is ve-ry near.